

tuell+reynolds

228 s. east street • cloverdale, california 95425

707.669.0556 fax: 707.669.0557

www.tuellreynolds.com

tuell+reynolds is a small company founded on the tradition of handcrafted excellence. Our goal is to create furnishings that will subtly enhance the beauty of any home. The qualities that distinguish our collection from others are the honesty of materials used, the harmony between these materials and the overall design of each piece, and the meticulous attention to detail and finish. Our collection is entirely handmade to order by craftsmen working with time-honored techniques and tools. We hope that you will enjoy our collection and look forward to assisting you with any inquiries or requests that you may have.

tuell+reynolds

228 s. east street • cloverdale, california 95425
707.669.0556 fax: 707.669.0557
www.tuellreynolds.com



navarro

patinaed steel with
cast bronze inlay
42" x 68" x 3" deep

MF-100

tuell+reynolds

228 s. east street • cloverdale, california 95425

707.669.0556 fax: 707.669.0557

www.tuellreynolds.com



eureka

patinaed steel and bronze
outside diameter 46"

MF-200

tuell+reynolds

228 s. east street • cloverdale, california 95425
707.669.0556 fax: 707.669.0557
www.tuellreynolds.com



monterey

architectural bronze
total height 70"

base 16" x 16" x 60" tall
laminated silk shade

FL-100

tuell+reynolds

228 s. east street • cloverdale, california 95425
707.669.0556 fax: 707.669.0557
www.tuellreynolds.com



tiburón

patinaed steel and cast bronze
total height 72"

base 10" x 10" x 63" tall
laminated silk shade

FL-200

tuell+reynolds

228 s. east street • cloverdale, california 95425

707.669.0556 fax: 707.669.0557

www.tuellreynolds.com



bolinas

cast bronze

total height 31"

base 7 1/2" x 3" x 19 1/2" tall

oval laminated silk shade

TL-150

tuell+reynolds

228 s. east street • cloverdale, california 95425

707.669.0556 fax: 707.669.0557

www.tuellreynolds.com



olema

cast bronze

total height 29 1/2"

base 4" diameter spindle
x 20" tall

laminated linen shade

TL-200

tuell+reynolds

228 s. east street • cloverdale, california 95425
707.669.0556 fax: 707.669.0557
www.tuellreynolds.com



stinson

architectural bronze

total height 25 1/2"

base 8 1/2" x 8 1/2" x 16" tall

laminated linen shade

TL-250

tuell+reynolds

228 s. east street • cloverdale, california 95425
707.669.0556 fax: 707.669.0557
www.tuellreynolds.com



estero

cast bronze

total height 23"

base 6 1/2" x 3 1/2" x 14" tall

oval laminated linen shade

TL-100

tuell+reynolds

228 s. east street • cloverdale, california 95425
707.669.0556 fax: 707.669.0557
www.tuellreynolds.com



mendocino

patinaed steel and bronze

26" x 44"

arm length 24"

laminated silk shade

custom sizes & configurations
available

CH-200

tuell+reynolds

228 s. east street • cloverdale, california 95425
707.669.0556 fax: 707.669.0557
www.tuellreynolds.com



manhattan

patinaed cast bronze

26" x 44"

arm length 24"

laminated silk shade

custom sizes & configurations
available

CH-100

tuell+reynolds

228 s. east street • cloverdale, california 95425

707.669.0556 fax: 707.669.0557

www.tuellreynolds.com



**manhattan
sconce**

patinaed cast bronze

total height 18"

projection from wall 8 3/4"

laminated silk shade

SC-100

tuell+reynolds

228 s. east street • cloverdale, california 95425
707.669.0556 fax: 707.669.0557
www.tuellreynolds.com



inverness

patinaed steel and cast bronze
shown with mitre tile

14" x 52 1/2" x 32" tall

T-100

tuell+reynolds

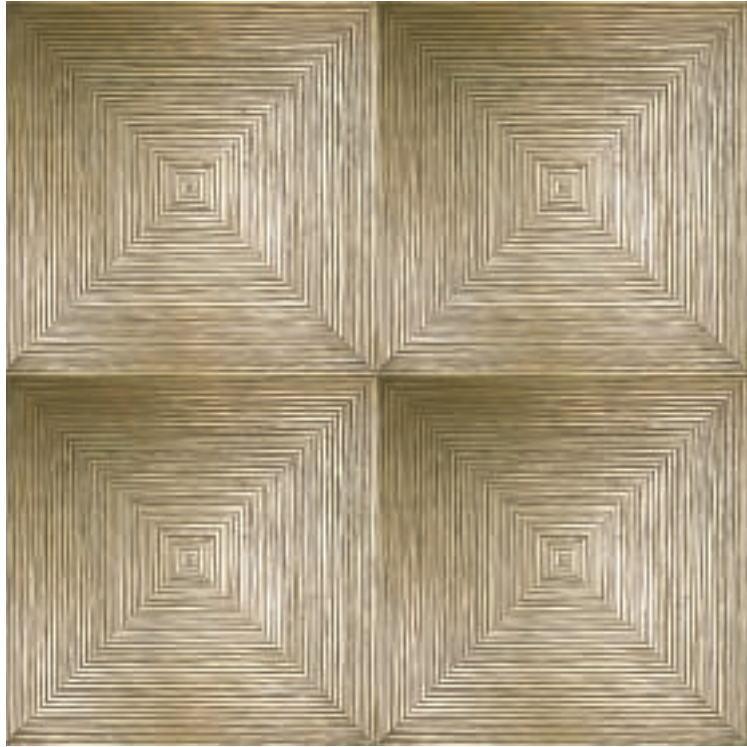
228 s. east street • cloverdale, california 95425

707.669.0556 fax: 707.669.0557

www.tuellreynolds.com

bronze tile

concentric



mitre



tuell+reynolds

228 s. east street • cloverdale, california 95425
707.669.0556 fax: 707.669.0557
www.tuellreynolds.com



belvedere

patinaed steel and bronze,
glass top

19" x 19" x 24" tall

T-200

tuell+reynolds

228 s. east street • cloverdale, california 95425
707.669.0556 fax: 707.669.0557
www.tuellreynolds.com



carmel

cast bronze top and base with
patinaed iron tie bar

47" diameter top, 16 3/4" tall

T-300

tuell+reynolds

228 s. east street • cloverdale, california 95425
707.669.0556 fax: 707.669.0557
www.tuellreynolds.com



tamalpais

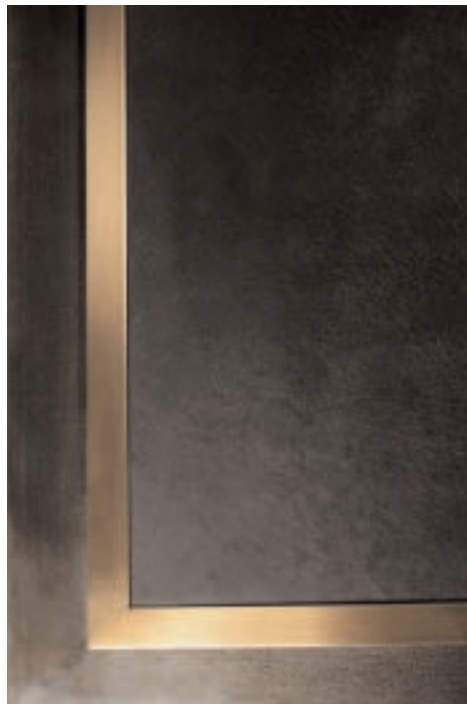
patinaed steel and cast bronze
shown with mitre tile

24" x 54" x 16" tall

T-150

tuell+reynolds

228 s. east street • cloverdale, california 95425
707.669.0556 fax: 707.669.0557
www.tuellreynolds.com



farallon

bronze and patinaed iron

28" x 60" 16 1/4" tall

leather top

other surfaces C.O.M. custom sizes

T-180

tuell+reynolds

228 s. east street • cloverdale, california 95425
707.669.0556 fax: 707.669.0557
www.tuellreynolds.com



farallon

bronze and patinaed iron

28" x 60" 16 1/4" tall

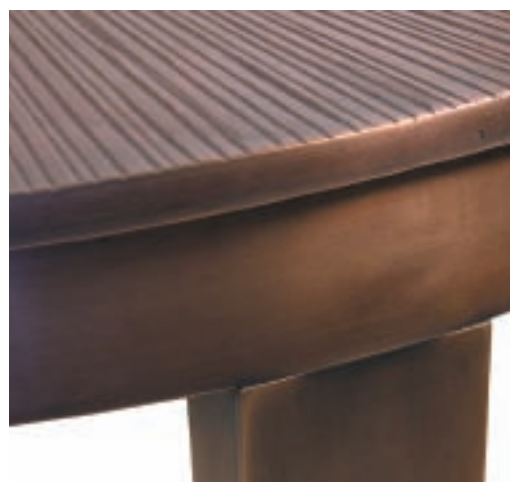
horn top

other surfaces C.O.M. custom sizes

T-185

tuell+reynolds

228 s. east street • cloverdale, california 95425
707.669.0556 fax: 707.669.0557
www.tuellreynolds.com



atherton

cast bronze top
with architectural bronze base
21 1/2" diameter x 28 1/2" tall

T-400

tuell+reynolds

228 s. east street • cloverdale, california 95425
707.669.0556 fax: 707.669.0557
www.tuellreynolds.com



nicasio

cast bronze base

27" diameter base 17 1/2" tall

custom sizes and shapes available

T-420

tuell+reynolds

228 s. east street • cloverdale, california 95425
707.669.0556 fax: 707.669.0557
www.tuellreynolds.com



catalina

cast bronze and patinaed iron
22" diameter 24 1/2" tall

T-450

tuell+reynolds

228 s. east street • cloverdale, california 95425

707.669.0556 fax: 707.669.0557

www.tuellreynolds.com



tilden

patinaed bronze and iron
28" diameter 16 1/4" tall

T-480

tuell+reynolds

228 s. east street • cloverdale, california 95425
707.669.0556 fax: 707.669.0557
www.tuellreynolds.com



ginza

cast bronze top with
leather inlay
patinaed iron legs
10" round x 20" tall

ST-100

tuell+reynolds

228 s. east street • cloverdale, california 95425
707.669.0556 fax: 707.669.0557
www.tuellreynolds.com



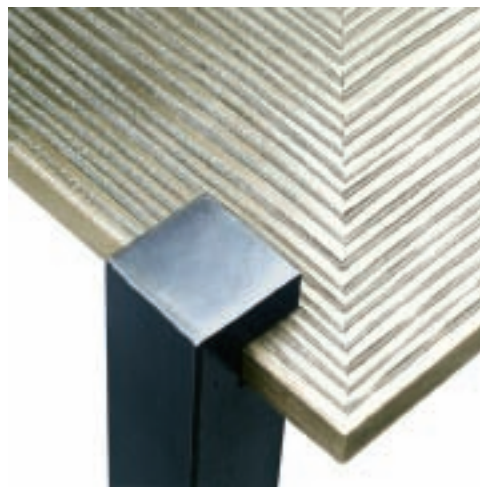
shinjuku

cast bronze top
patinaed iron legs
10" round x 20" tall

ST-150

tuell+reynolds

228 s. east street • cloverdale, california 95425
707.669.0556 fax: 707.669.0557
www.tuellreynolds.com



hakone

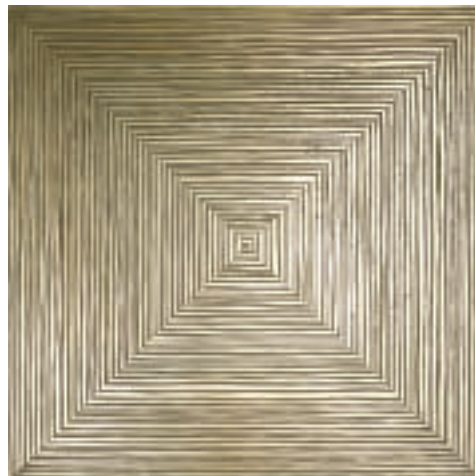
cast bronze top
shown with concentric tile
patinaed iron legs
10" square x 20" tall

ST-200

tuell+reynolds

228 s. east street • cloverdale, california 95425
707.669.0556 fax: 707.669.0557
www.tuellreynolds.com

bronze tile



concentric



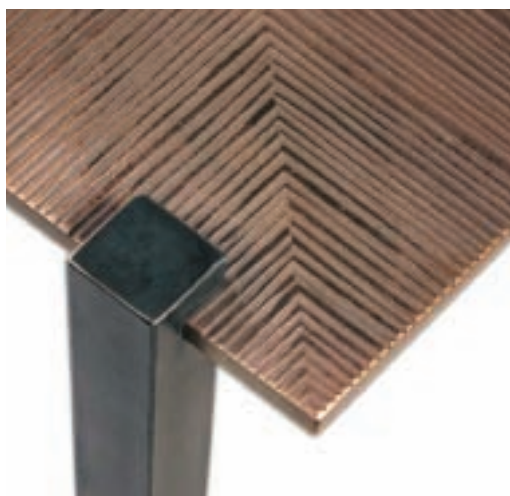
mitre

tuell+reynolds

228 s. east street • cloverdale, california 95425

707.669.0556 fax: 707.669.0557

www.tuellreynolds.com



4 square hakone

cast bronze top

shown with mitred tiles

patinaed iron legs

available in two sizes:

14" square x 27" tall ST-220

19 3/8" square x 27" tall ST-230

tuell+reynolds

228 s. east street • cloverdale, california 95425
707.669.0556 fax: 707.669.0557
www.tuellreynolds.com



seacliff

patinaed bronze
18" round x 22" tall

ST-300

tuell+reynolds

228 s. east street • cloverdale, california 95425
707.669.0556 fax: 707.669.0557
www.tuellreynolds.com



québec

patinaed iron and cast bronze
10 1/2" tall x 20" deep"

FPA-150

tuell+reynolds

228 s. east street • cloverdale, california 95425
707.669.0556 fax: 707.669.0557
www.tuellreynolds.com



montreal

patinaed iron and cast bronze
20 1/2" tall x 20" deep"

FPA-100

tuell+reynolds

228 s. east street • cloverdale, california 95425
707.669.0556 fax: 707.669.0557
www.tuellreynolds.com



baltimore

patinaed iron and cast bronze
25 1/2" tall x 20" deep"

FPA-200

tuell+reynolds

228 s. east street • cloverdale, california 95425
707.669.0556 fax: 707.669.0557
www.tuellreynolds.com



vermont

patinaed iron & hand chased bronze
24" tall x 20" deep"

FPA-300

tuell+reynolds

228 s. east street • cloverdale, california 95425
707.669.0556 fax: 707.669.0557
www.tuellreynolds.com



telluride

patinaed iron and cast bronze

17 3/4" tall x 20" deep"

FPA-400

tuell+reynolds

228 s. east street • cloverdale, california 95425

707.669.0556 fax: 707.669.0557

www.tuellreynolds.com



olympia firegrate

patinaed iron

27" x 15" 7" tall

custom sizes available

FPA-360

tuell+reynolds

228 s. east street • cloverdale, california 95425

707.669.0556 fax: 707.669.0557

www.tuellreynolds.com



**pasadena
firegrate**

patinaed iron

27 1/2" x 15" 9" tall

custom sizes available

FPA-350

tuell+reynolds

228 s. east street • cloverdale, california 95425

707.669.0556 fax: 707.669.0557

www.tuellreynolds.com



aspen

patinaed bronze and steel

16 1/2" wide x 18" long x 9" tall

FPA-500

tuell+reynolds

228 s. east street • cloverdale, california 95425
707.669.0556 fax: 707.669.0557
www.tuellreynolds.com



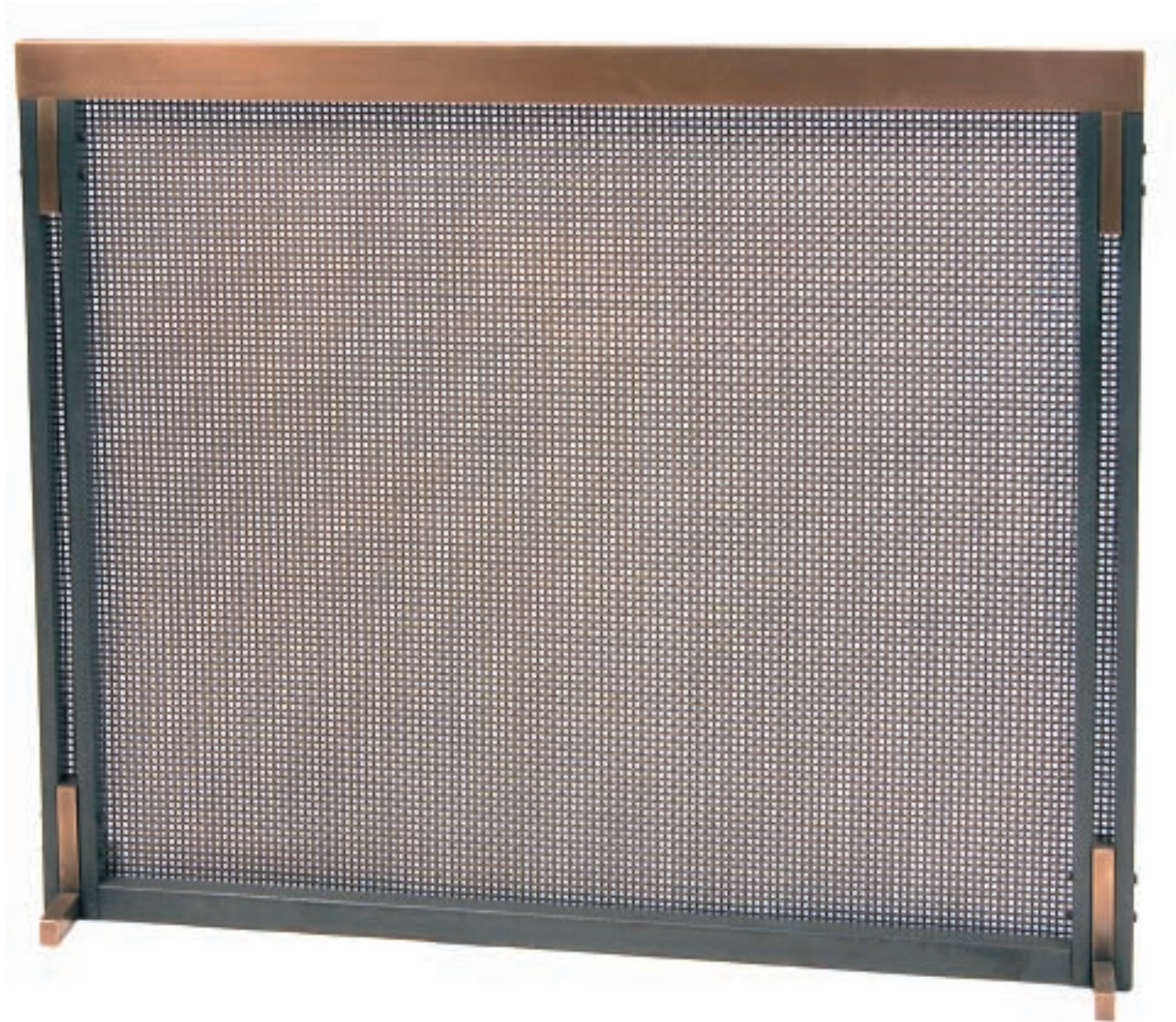
montana

patinaed bronze and iron
9 3/8" diameter base
31" overall height

FPA-600

tuell+reynolds

228 s. east street • cloverdale, california 95425
707.669.0556 fax: 707.669.0557
www.tuellreynolds.com



vancouver

patinaed bronze and iron

custom sizes up to 36" x 48" wide

FPA-700

tuell+reynolds

228 s. east street • cloverdale, california 95425
707.669.0556 fax: 707.669.0557
www.tuellreynolds.com



peened handle



cross peened handle



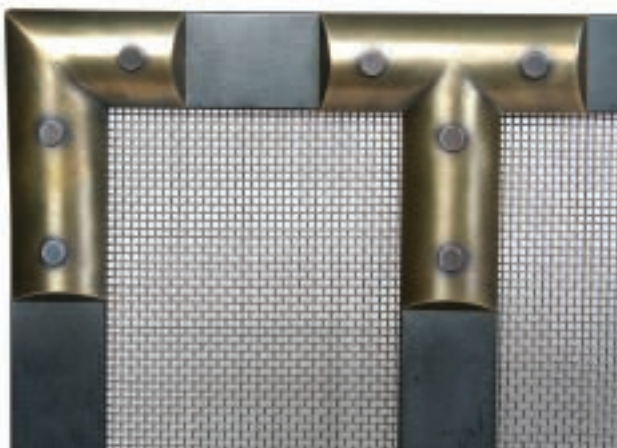
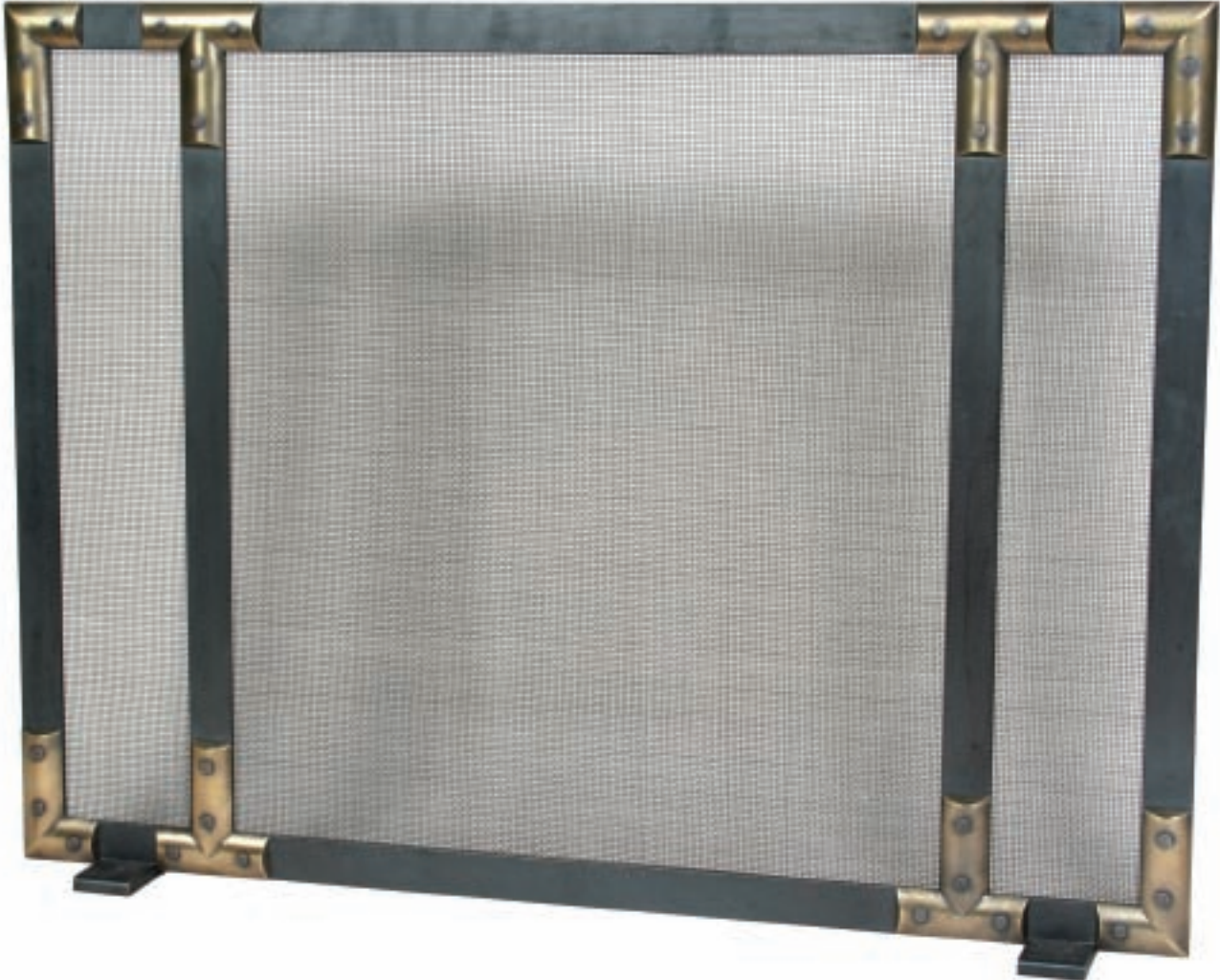
tahoe

patinaed bronze and iron
custom sizes up to 36" tall x 48" wide

FPA-800

tuell+reynolds

228 s. east street • cloverdale, california 95425
707.669.0556 fax: 707.669.0557
www.tuellreynolds.com



m o r a g a

patinaed bronze and iron
custom sizes up to 48" x 50" wide

FPA-750

tuell+reynolds

228 s. east street • cloverdale, california 95425
707.669.0556 fax: 707.669.0557
www.tuellreynolds.com



drapery hardware

patinaed architectural
bronze

see shop drawings for
specifications and options.

terms & conditions

Terms:

All **tuell+reynolds** furniture is made to order. A deposit of 50% of sale price is required before work will commence. Lead time for production is 6-8 weeks from receipt of deposit. Shipping time is additional. Full payment, including state or local taxes if applicable, crating, handling, storage, and insurance if applicable, shall be made by Customer and received by **tuell+reynolds** before delivery or shipment to Customer.

Small items may be shipped by UPS. Larger items may require crating. Delivery dates are approximate and **tuell+reynolds** will not be responsible for any delay or failure to perform due to circumstances beyond our control. We recommend shipment by moving van, blanket wrapped. If shipment by common carrier is requested, crating is required.

Prices:

All prices are wholesale, freight on board (F.O.B.) Cloverdale, California. Prices do not include: shipping charges, storage, local delivery, cartoning, crating, packing, sales tax, or uncrating. Prices are in U.S. Dollars.

Ordering Procedure:

All orders must be in writing, with item name, number and finish included on your purchase order. Deposit check of 50% of sale price must accompany your order and be mailed to our corporate office:

tuell+reynolds, inc. 228 s. east street • cloverdale, california 95425
tel (707) 669-0556 fax (707) 669-0557

Custom Orders/Finishes:

tuell+reynolds welcomes your request for a custom order. As our products are hand made to order, many minor changes can be accommodated at no additional cost. Please contact a sales representative with your request.

Custom Design:

tuell+reynolds can provide design and fabrication for a large range of projects both large and small. Please visit our web site www.tuellreynolds.com to see examples of our work, or contact us directly to discuss your project.

Designs/Dimensions:

All designs are the property of **tuell+reynolds, inc.** We reserve the exclusive right to produce these designs. Design details are subject to change without notice. All dimensions are approximate.

Construction:

All fabricated steel is cold rolled and drawn tube. Formed and forged steel is hot rolled bar stock. All textured bronze is cast silicon bronze C65500. Fabricated and Architectural bronze is 385 and 280. Finish is hot-waxed and hand polished, or clear powdercoat on cold rolled steel.

Finishes:

All finishes are patinaed. The patina process is a chemical oxidation subject to changes in method of application and metal densities. Sample finishes are representative only and final color or overall appearance cannot be guaranteed.

terms & conditions

Luminaries:

All luminaries meet UL standards. Total height is measured to the top of our standard shade. Base dimensions indicate the footprint and height to the base of the socket. Standard cord length is 4' for table lamps, 6' for floor lamps. Switches are located on the socket base. All sockets are 3-way.

Care and Maintenance:

Our metals are protected with a hand rubbed paste wax applied hot. We recommend rewaxing at least once a year to maintain luster and beauty. Trewax brand paste wax for wood floors may also be used. Any liquid spills should be wiped up immediately. Acidic liquids, abrasive and ammonia based cleaners may damage the patina. Pledge brand cleaner may be used with a soft cloth for periodic dusting and cleaning. In general, care for your metals as you would a fine wood table or any antique.

Exposure:

All work as finished is intended for interior use only. If you would like to use any of our products outdoors, please contact us for specific finish options.

Changes/Cancellations:

Changes in orders are subject to prior written approval by **tuell+reynolds** and will not be approved once production has been started. Changes may affect the price and cause production/shipping delays. Cancellations accepted after production begins may forfeit the deposit.

Returns:

No returns will be accepted without prior written consent of **tuell+reynolds**. Authorized returns must be shipped in accordance with shipping instructions issued by **tuell+reynolds**. Unauthorized returns will be refused.

Force Majeure:

tuell+reynolds is not liable for delays in shipping or failure to perform due to labor dispute, war, riot, fire, earthquake, acts of God, compliance with government regulations, or any other cause beyond our control.

Claims:

All orders are carefully inspected prior to shipment. When the freight company or delivery service accepts your order the merchandise belongs to you. Purchaser must carefully inspect orders promptly upon delivery. If there is any damage, you must describe the extent of damage on the delivery receipt. All claims must be made in writing and delivered to the freight carrier immediately.

Limited Warranty:

tuell+reynolds warrants its standard catalog items to be free from defects in construction and or finish for a period of one year from date of final invoice. Instructions for care and maintenance must be followed.

Storage:

Due to limited space in our studio, all orders must be shipped upon completion and final payment. Items not picked up within 20 days of completion will be subject to storage and handling fees. Minimum storage fees of \$60 per month, per item, will be added to your final invoice. No order will be released until storage fees have been paid.